



Představení SAP S/4HANA

Nový ERP systém od společnosti SAP.
Součást Suite on HANA.

Ladislav Horváth

SAP Solution Architect

sabris
friendly professional

A hand holding a pen over a laptop keyboard, with a vertical bar of orange squares to the right.

Co jsem?

Co umím?

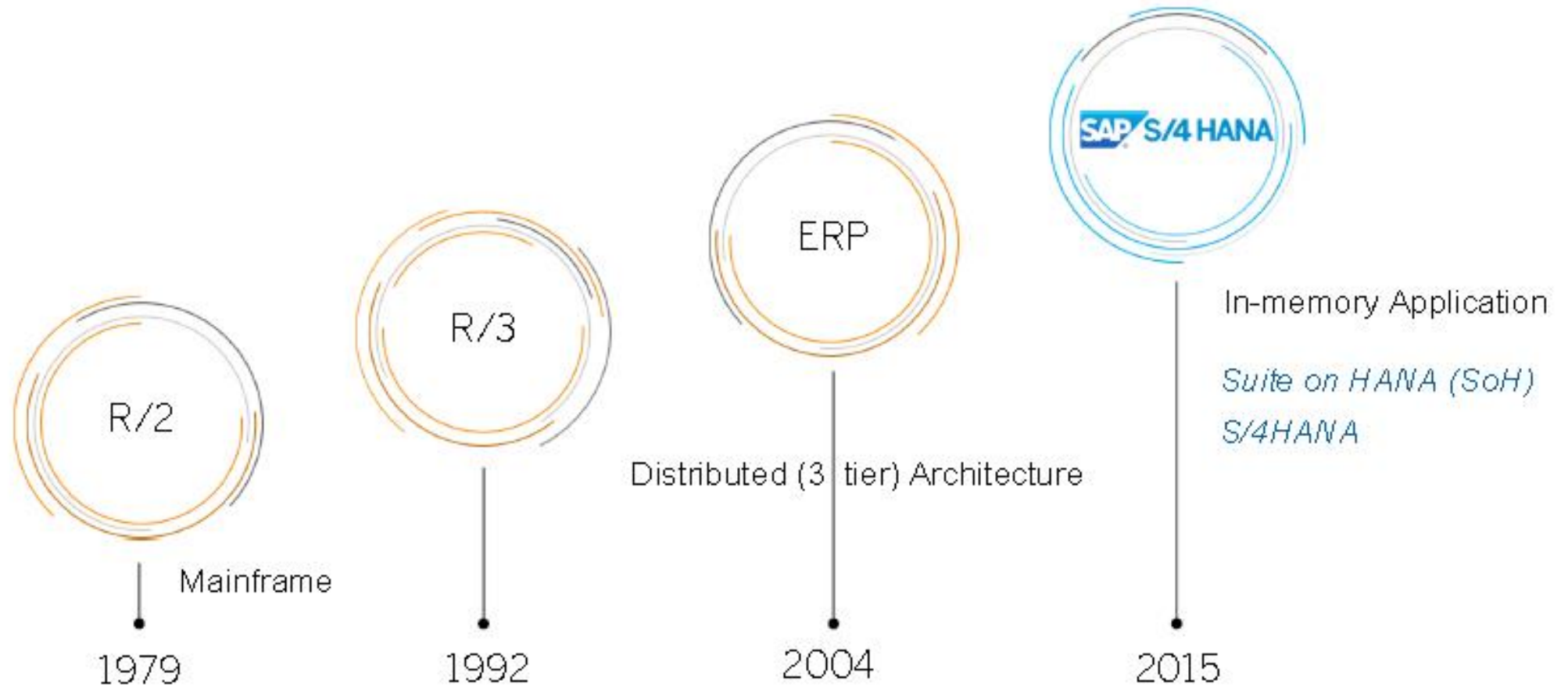
Co Vám mohu přinést?

Jak mě můžete mít?

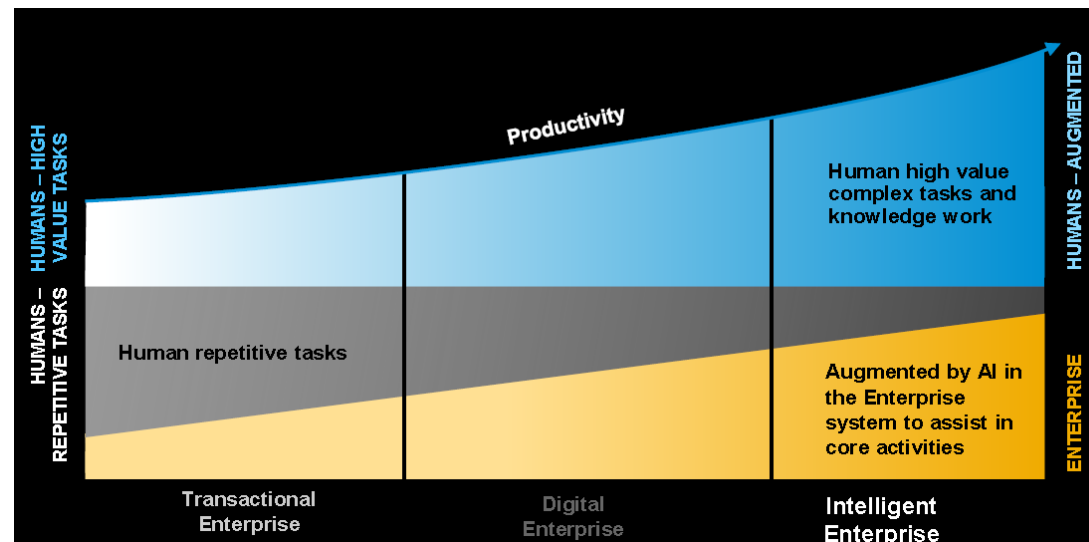
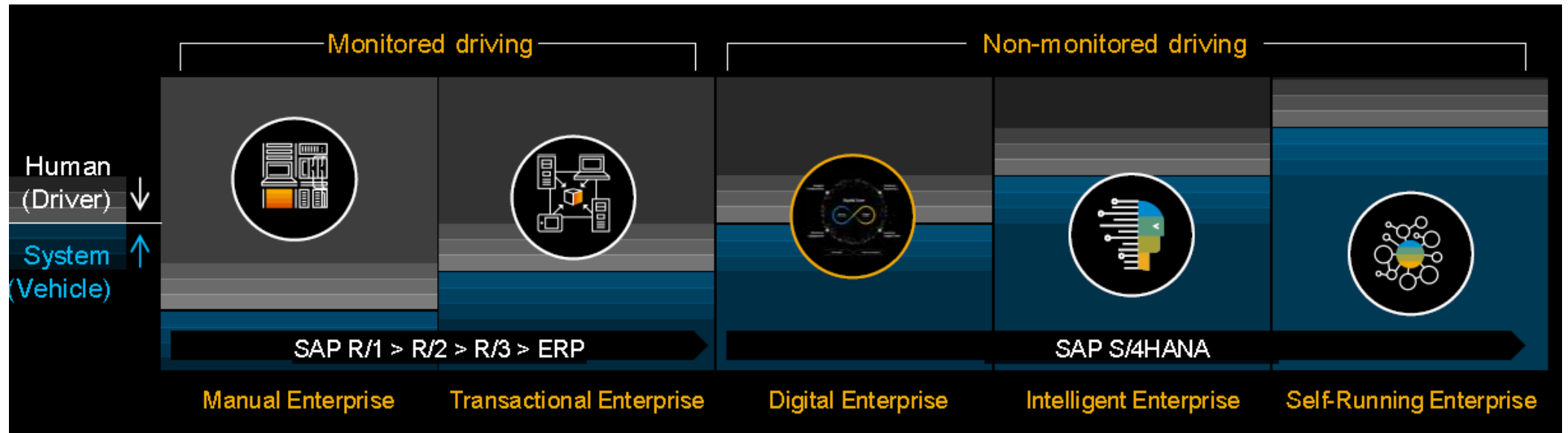
Co jsem?



Od R/2 k S/4HANA



S/4HANA je reakcí na změny v ekonomice



Důležité odkazy

- Hlavní stránka SAP S/4HANA
 - https://help.sap.com/viewer/product/SAP_S4HANA_OVERVIEW/latest/en-US
- SAP Best Practices pro S/4HANA
 - <https://rapid.sap.com/bp/>
- SAP Fiori katalog
 - <https://fioriappslibrary.hana.ondemand.com/sap/fix/externalViewer/>
- SAP Road Maps
 - <http://www.sap.com/roadmaps>

Co umím?



Plná podpora pro End-To-End procesy



advanced Availability
to Promise (with
embedded PP/DS)



Effective Order
Management & Billing



Entire S/4HANA Finance
scope included in the core



Accelerated Material
Requirements Planning



Efficient
Procurement



Embedded Software in
Product Development



Real time Inventory Management
& Material Valuation



Embedded Extended
Warehouse Management



Optimized Portfolio and
Project Management



Integrated Quality
Management



Industry to Core
(DIMP, Oil, Retail)



Consistent Fiori UX for
SAP S/4HANA

Digital Core



Novinky v S/4HANA OP1610

Key Innovations SAP S/4HANA Enterprise Management 1610



Advanced Availability to Promise



The Fiori UX of SAP S/4HANA



Entire S/4HANA Finance scope to Core



Integrated Extended Warehouse Management



Embedded Software in Product Development



Industry to Core (DIMP, Oil, Retail)



Integrated Quality Management



Simplified Procurement



Effective Order Management & Billing



Optimized Portfolio and Project Management




Real time Inventory Management & Material Valuation



Accelerated Material Requirements Planning

 New innovations

 Existing & enhanced innovations

Novinky v S/4HANA OP1709

SAP S/4HANA 1709

Key innovations

■ New innovations

■ Existing and enhanced innovations



Embedded transportation management

- Basic shipping and data harmonization
- Integration in extended warehouse mgmt.



Consumer products industry

- Catch weight management for system conversion



Commodity management

- Extending pricing with the commodity pricing engine



Industry to core: retail, wholesale

- Wholesale fashion enablement; order allocation; segmentation



Service core (new add-on)

- Migration of installed-base CRM customers with eliminated middleware, harmonized data models



Manufacturing

- Demand-driven manufacturing
- Advance variant configuration



Finance

- Machine learning with integration to SAP Cash Application; financial planning



Procurement

- Centralized purchase requisitions through hub deployment
- Machine learning for contract consumption



Enterprise asset management

- Report and repair malfunction
- Breakdown analysis



Sales

- Electronic and digital payments with integration with payment hub



Manufacturing

- Engineering cockpit
- Extension for complex assembly industries



Quality management

- Managing usage decisions
- Analytics for quantitative results



Extended warehouse management

- Advanced labor management
- Pallet planning



Product lifecycle management

- Visual enterprise generator conversion
- Recipe management and recipe finder










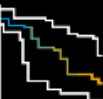







Maximizing the SAP Fiori user experience

- SAP Fiori overview pages

Plánované novinky v S/4HANA OP1809

LAB
PREVIEW

SAP S/4HANA 1809 – Key Innovations

 <p>Embedded Transportation Management</p> <ul style="list-style-type: none"> - Further enablement of TM Core functionality - SCDP CCA for mixed building & load planning 	 <p>Digital Manufacturing</p> <ul style="list-style-type: none"> - Production Engineering and Operations provides Manufacturing Execution capabilities for high complex assembly, low volume, manual processing - Final Assembly for A&D specifics 	 <p>Inventory Management</p> <ul style="list-style-type: none"> - Predictive Analytics / ML - Posting goods receipt for production order - Inventory Analysis
 <p>Produce</p> <ul style="list-style-type: none"> - Demand-driven replenishment - Predictive MRP - ATP: Alternative-Based-Confirmations 	 <p>Finance</p> <ul style="list-style-type: none"> - Soft close and prediction; parallel valuation - Intercompany reconciliation - SAP Analytics Cloud for financial planning - SCP for Finance, Treasury, real estate 	 <p>Quality Management</p> <ul style="list-style-type: none"> - Quality inspection – recording results - Complaint management recording/monitoring - Analyze KPI's for quality management data
 <p>Commodity Management</p> <p>Mark-to-Market, Risk Management transactions for hedging of commodities; Commodity Sub Accounts</p>	 <p>Procurement</p> <ul style="list-style-type: none"> - Centralized purchase requisitions through hub and central contract management hub - Integration of SAP Ariba Buying with SAP S/4HANA 	 <p>Extended Warehouse Management</p> <ul style="list-style-type: none"> - advanced QM Integration - embedded Analytics labor management - Inventory Management customer owned stock
 <p>Industry to Core Retail / Wholesale</p> <ul style="list-style-type: none"> - Fashion Management - Wholesale Fashion (Fashion Contracts) 	 <p>Enterprise Asset Management</p> <ul style="list-style-type: none"> - Overview Page for Planner - Damage Analysis - Task list and operations 	 <p>PLM</p> <ul style="list-style-type: none"> - Variant Configuration – multi level; CPQ; Classification - Recipe Development and Recipe finder
 <p>Service Core – Service Management</p> <ul style="list-style-type: none"> - Embedded Service Management (Service Core) with eliminated middleware, harmonized data models 	 <p>Sales</p> <ul style="list-style-type: none"> - Simplified Sales Order creation - Mass changes for sales orders - Approval workflows for sales processes 	 <p>Integration</p> <ul style="list-style-type: none"> - Ariba Buying for Sourcing - R&D Engineering with CPQ - EAM with AIN for Equipment - TM into Global Track & Trace

© 2018 SAP SE or an SAP affiliate company. All rights reserved. | PUBLIC

 New innovations
 Existing & enhanced innovations

* First delivery with SAP S/4HANA 1709 FPS01 in 2018

Vestavěné analytické nástroje

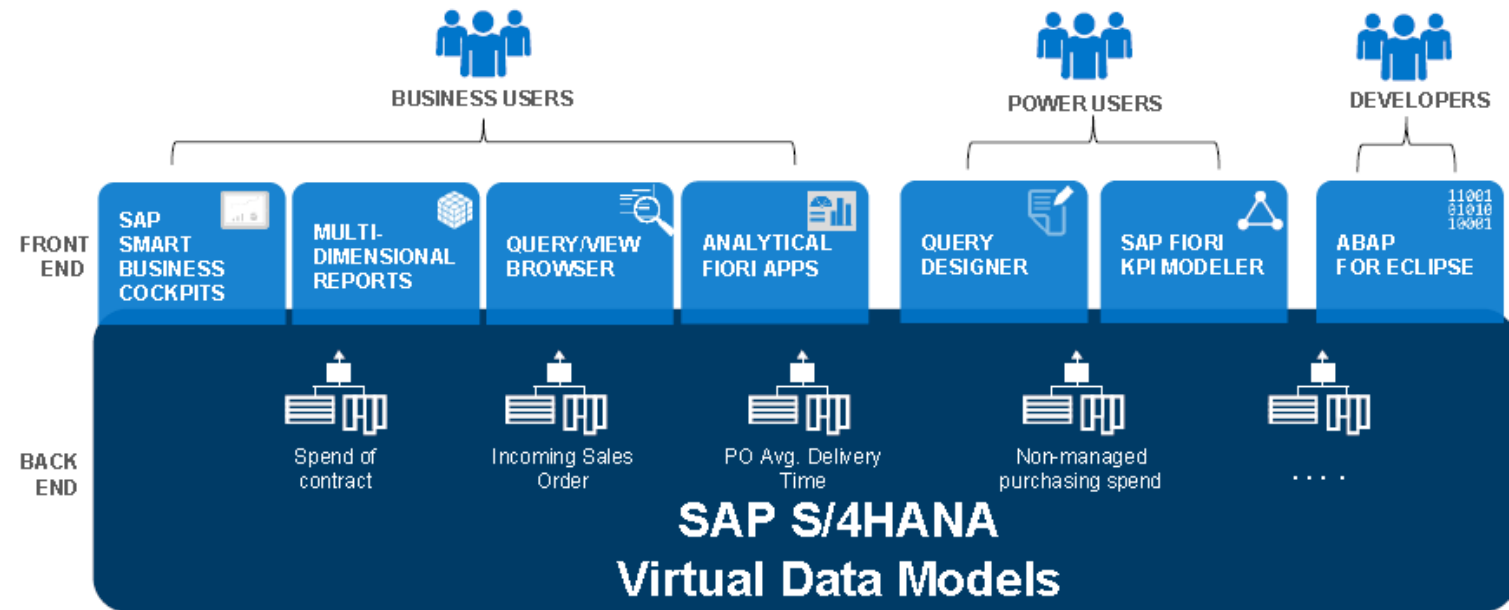
SAP S/4HANA embedded analytics:

- Delivers contextualized analytics for SAP S/4HANA embedded within the context of work and tailored to business needs and roles
- Consists of Virtual Data Models (based on CDS Views) covering role based operational reports for lines of business
- Comes with tools for Business Users, Power Users and Developers to analyze data and manage the lifecycle of reports and KPIs

SAP Highlights:

- Continuous extension of the Virtual Data Model more than 6000 views and more than 120 new Embedded Applications (KPI's) planned
- View Browser Fiori Application to show all delivered Views
- SAP Smart Business and Analysis Path Framework Integration

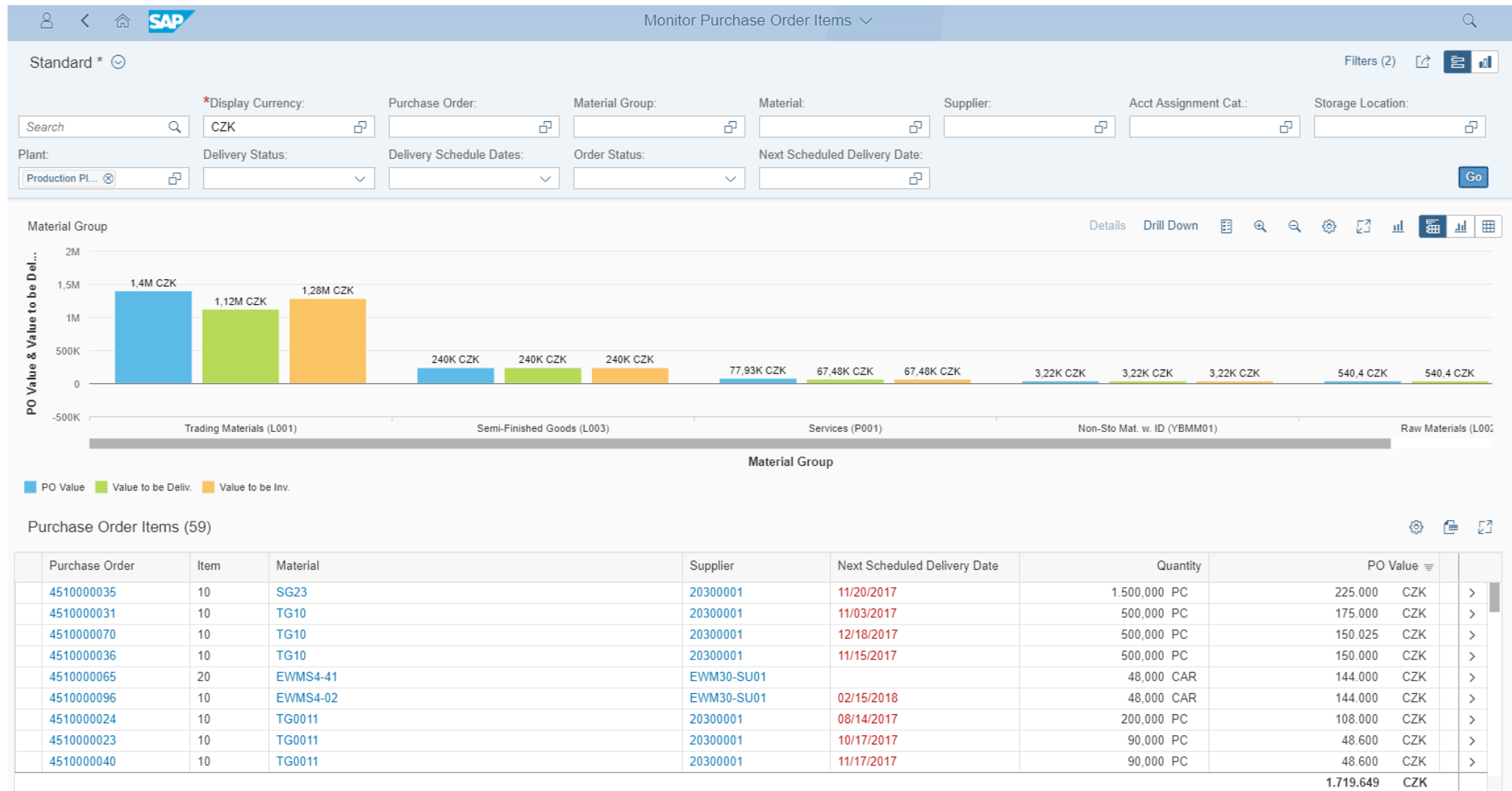
SAP S/4HANA embedded analytics



*CDS: Core Data Service

1JI Reporting and Monitoring for Procurement

- Monitor Purchase Order Items



1JI Reporting and Monitoring for Procurement

- Procurement Overview

Procurement Overview				All	Monitor Supplier Confirmation
Standard Not Filtered					
Monitor Purchase Contracts 3 of 4		Monitor Purchase Requisition Items 3 of 182		Monitor Purchase Order Items 3 of 77	
Sorted by consumption, valid-to date, and target value		Sorted by delivery date and value		Sorted by overdue days and value	
		Unsourced		Overdue	
BPCZ Supplier CZ - do... 4410000002		RAW120,PD,řízení ja... 10000035/10		Supplier DE Trading Good 0011,PD,Regul... 4510000005/10	
in 7 months 0,0 CZK 23,6K %		9 months ago 10,0 ST 12,5 EUR		last year 100,0 PC 3,0K EUR	
BPCZ Supplier CZ - do... 4410000003		RAW233-1, PD, KAN... 10000497/10		Supplier DE Trading Good 0011,PD,Regul... 4510000006/10	
in 7 months 0,0 CZK 43,3K %		7 months ago 2,0K ST 162,1K CZK		last year 100,0 PC 3,0K EUR	
BPCZ Supplier CZ - do... 4410000004		RAW233-1, PD, KAN... 10000498/10		BPCZ Supplier CZ - ... 4510000010/10	
in 7 months 0,0 CZK 42,3K %		7 months ago 2,0K ST 162,1K CZK		11 months ago 15,0 H 1,0K EUR	
				No data	

Moderní uživatelské prostředí – SAP Fiori Launchpad

Me-Area

Replacing former shell header menu
Shows recent activities now

Anchor bar navigation

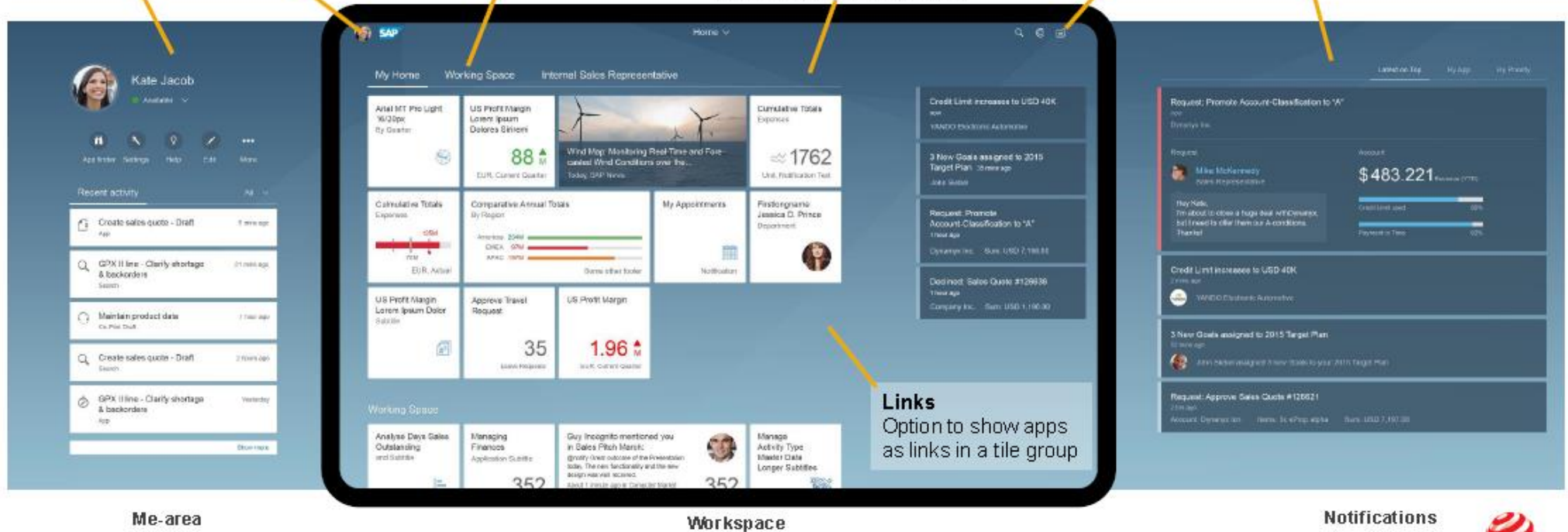
Replacing group menu

Shell header

Revised, launching notification and me-area viewports and Co-Pilot window. Provides navigation menu when app is launched by clicking on title

Notifications

Shown in separate viewport that opens on clicking respective icon in shell header

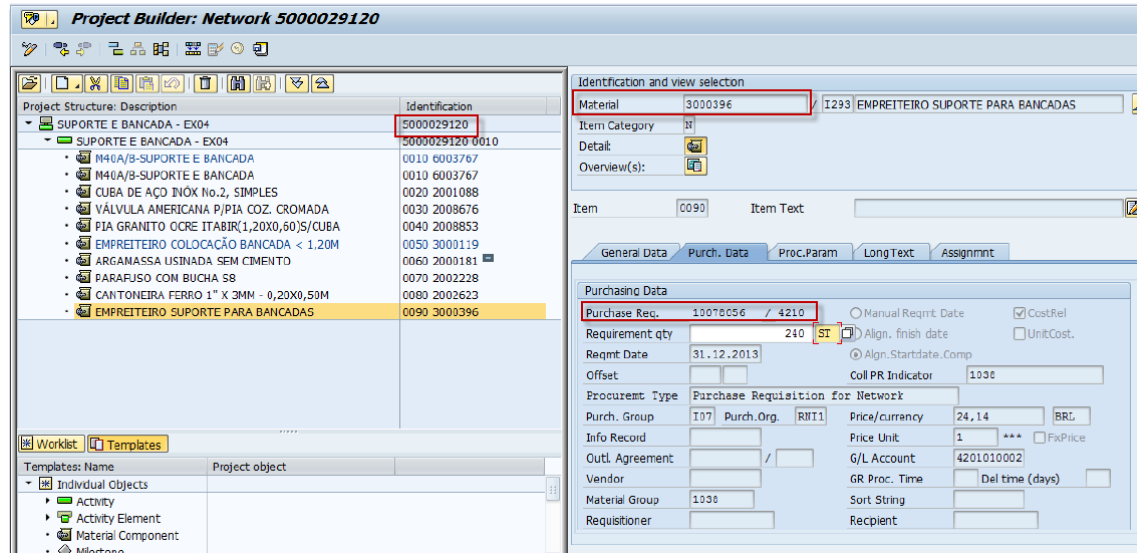


Links

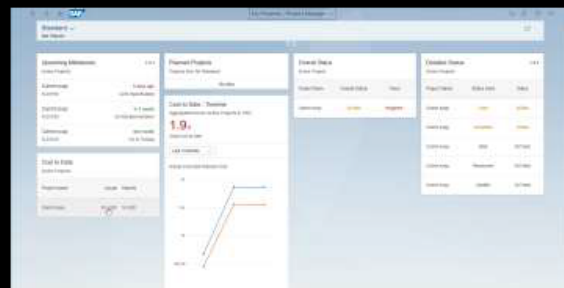
Option to show apps as links in a tile group



Uživatelské prostředí přizpůsobené rolím

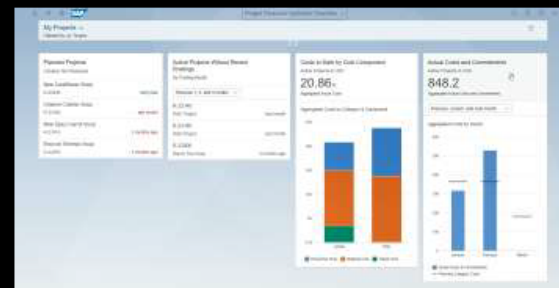


Project Manager



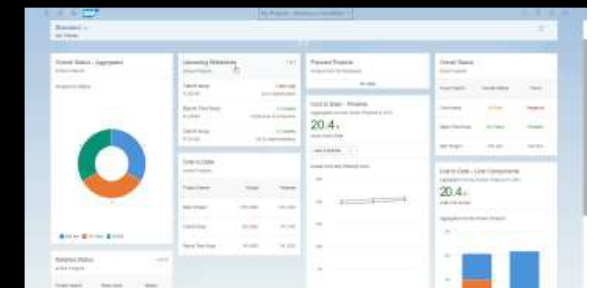
Project Manager focuses on schedule, progress, upcoming milestones of their projects

Project Financial Controller



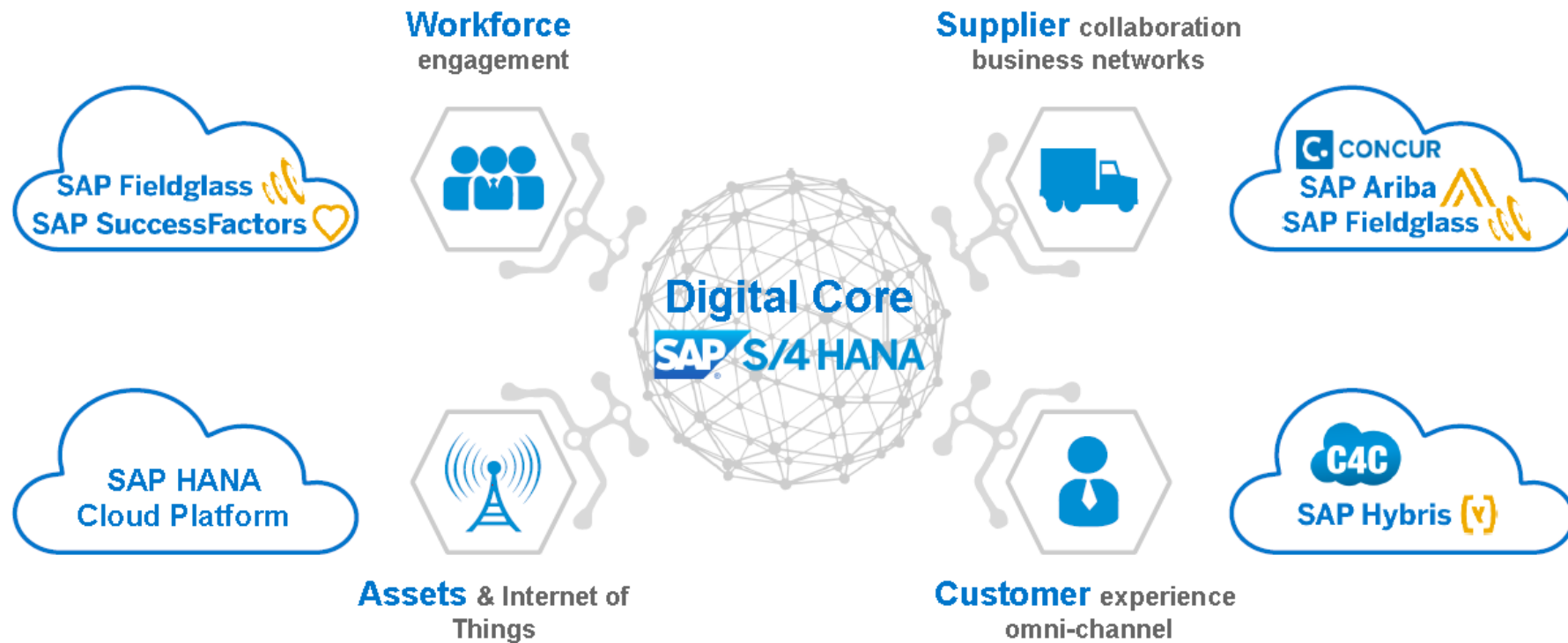
Project Financial Controller focuses on costs, commitments of projects in their area

Project Steering Committee Member



Project Steering Committee Member focusses on business status, alerts where they are stakeholders

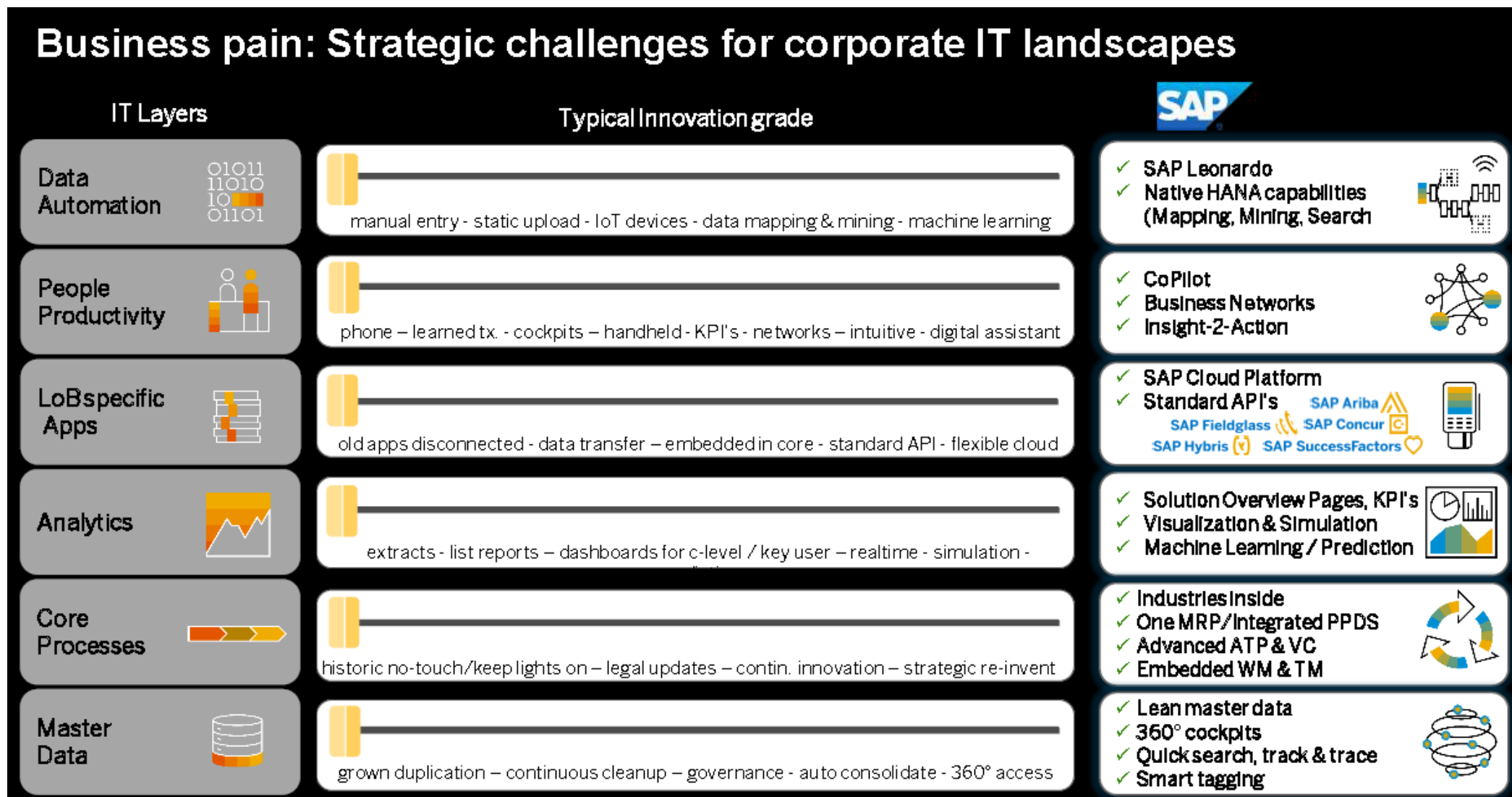
Integrace se SAP Cloud aplikacemi



**Co Vám mohu
přinést?**



Strategické příležitosti



Jak mě můžete mít?



Možnosti implementace S/4HANA

Deployment	SAP S/4HANA Enterprise Management		SAP S/4HANA Enterprise Management Cloud	
	On Premise	HANA Enterprise Cloud	Private option	Public option
Scope	Full ERP scope	Full ERP scope	Full ERP scope	Essential digital business processes
Process Flexibility	Full process flexibility; complete configuration scope, extensions and modifications possible	Full process flexibility; complete configuration scope, extensions and modifications possible	Full process flexibility and configuration options within standardized packages; extensions to standard code possible	Guided process flexibility; extensions to standard code available
SW & DB Licensing	Traditional license & maintenance model	Traditional license & maintenance + subscription model	Single subscription contract	Single subscription contract
Application Management and Infrastructure Services	Customer responsibility	Available as additional, customer-specific options	Standard AMS included in single subscription contract	Included in single subscription contract
Support	Based on support agreement	Customer-specific options	Cloud Enterprise Support	Cloud Enterprise Support
System Governance	Customer	Customer	Shared responsibility	SAP
Management Model	Customer owns all upgrades	Customer owns all upgrades, but can delegate for additional costs	Shared responsibility. Customer is responsible for project and testing.	SAP provides upgrades
End User Access	Web + SAPGui	Web + SAPGui	Web + SAPGui	Web only
Innovation Cycle	Annual	Annual	Annual	Quarterly

A vertical image showing a close-up of a hand holding a pen, poised to write on a document. The hand is resting on a laptop keyboard. The entire image is overlaid with a semi-transparent blue filter.

SAP S/4HANA – The right solution for each customer situation

SAP S/4HANA, on premise

Managed by customers

- On-premise functional scope
- All industries supported
- Customize, modify, and extend
- Annual release cycle, speed of adoption on customers' schedule
- Best-in-class deployment/upgrade efforts for on-premise ERP
- Perpetual licensing
- Runs on customer preferred infrastructure

SAP S/4HANA, private managed cloud (HEC)

Managed by SAP

- On-premise functional scope
- All industries supported
- Customize, modify, and extend
- Annual release cycle, speed of adoption on customers' schedule
- Best-in-class deployment/upgrade efforts for on-premise ERP
- BYOL or subscription
- Customer specific system landscape
- Runs on SAP HANA Enterprise Cloud
- SAP-managed services on private cloud infrastructure (SAP, AWS, or Microsoft Azure)

Cloud ERP*

SAP S/4HANA Cloud, private edition

Single-tenant

- Configurable and customizable processes for finance, HR, procurement, Sales and other LoB's
- S/4HANA Extensibility Framework and extensions via SCP
- All industries supported
- Half year release cycle, customers chooses upgrade window within 12 months
- Low TCO and fast time to value
- Subscription licensing
- Dedicated system landscape on cloud infrastructure

SAP S/4HANA Cloud

Multi-tenant

- Selected and preconfigured essential digital business processes using best practices
- Defined Self-Service Configuration available
- Defined extensibility options and extensions via SCP
- In-depth support for professional services and component manufacturing; more industries on road map
- Quarterly release cycle
- Lowest TCO and fastest time to value
- Subscription licensing
- Public cloud infrastructure

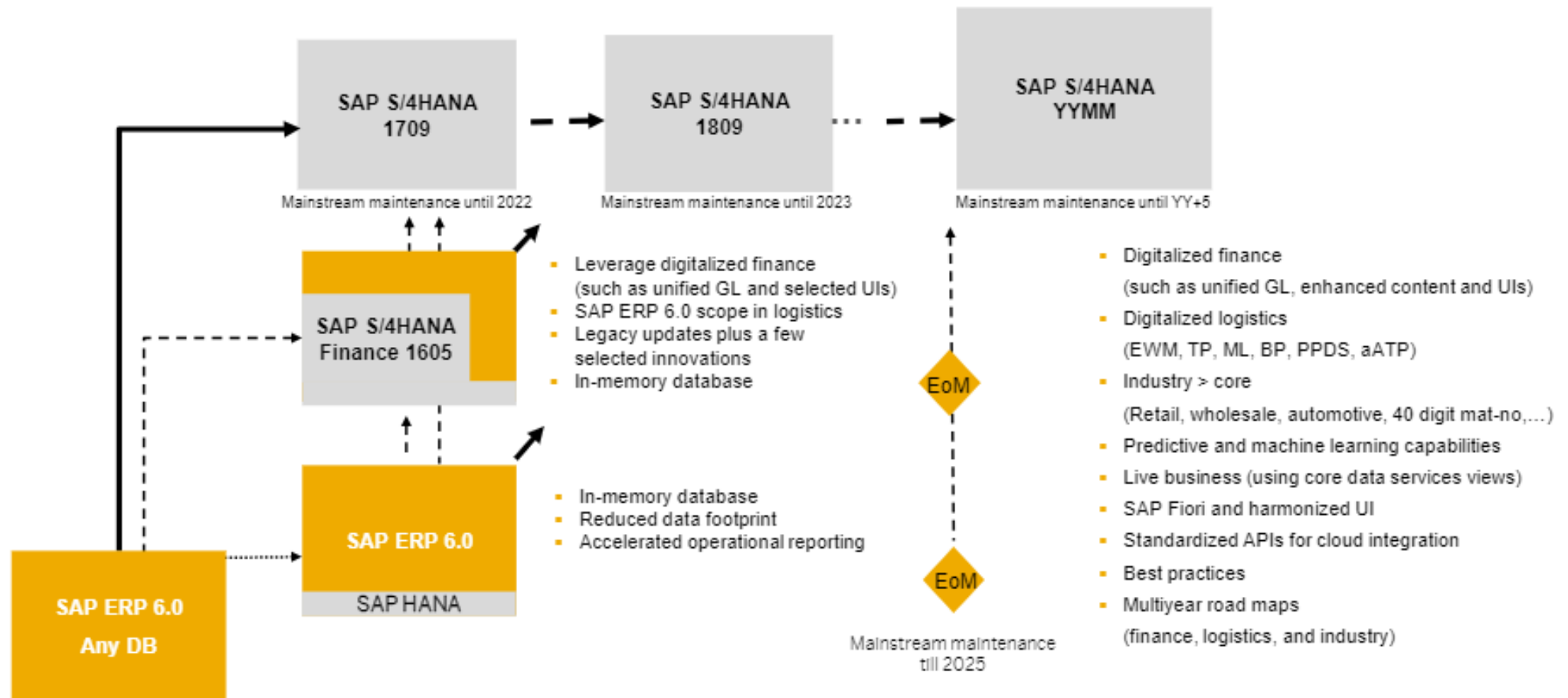
© 2018 SAP SE or an SAP affiliate company. All rights reserved. | PUBLIC

*According to Gartner Cloud Definition

28

Možnosti konverze SAP ERP na SAP S/4HANA

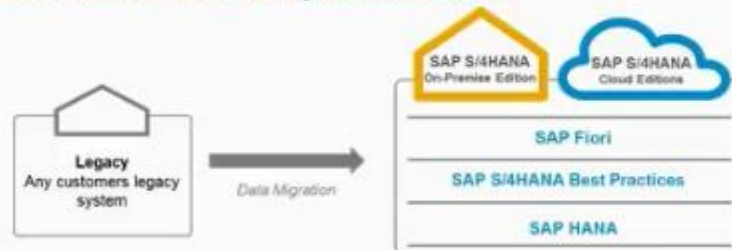
Paths from SAP ERP to SAP S/4HANA



Metodika nasazení S/4HANA

The Road to **SAP S/4HANA** with **SAPACTIVATE**

Scenario 1: New Implementation



DESCRIPTION

New installation of SAP S/4HANA e.g. for customers migrating a legacy system.

BENEFITS

- New implementation of industry-leading Business Suite
- Reengineering and process simplification based on ready-to-run business processes and reference solution delivered with the product

TARGET GROUP

SAP Business Suite customers or net new customers

Scenario 2: System Conversion



DESCRIPTION

Customers who want to change their current system into a SAP S/4HANA system.

BENEFITS

- Migration without reimplementation
- No disruption for existing business processes
- Re-evaluation of customization and existing process flows
- Transformation over time

TARGET GROUP

SAP Business Suite customers with SAP ERP or SAP Business Suite on SAP HANA as starting point

Scenario 3: Landscape Transformation



DESCRIPTION

Customers who want to consolidate their landscape or carve out selected entities or processes into a SAP S/4HANA system.

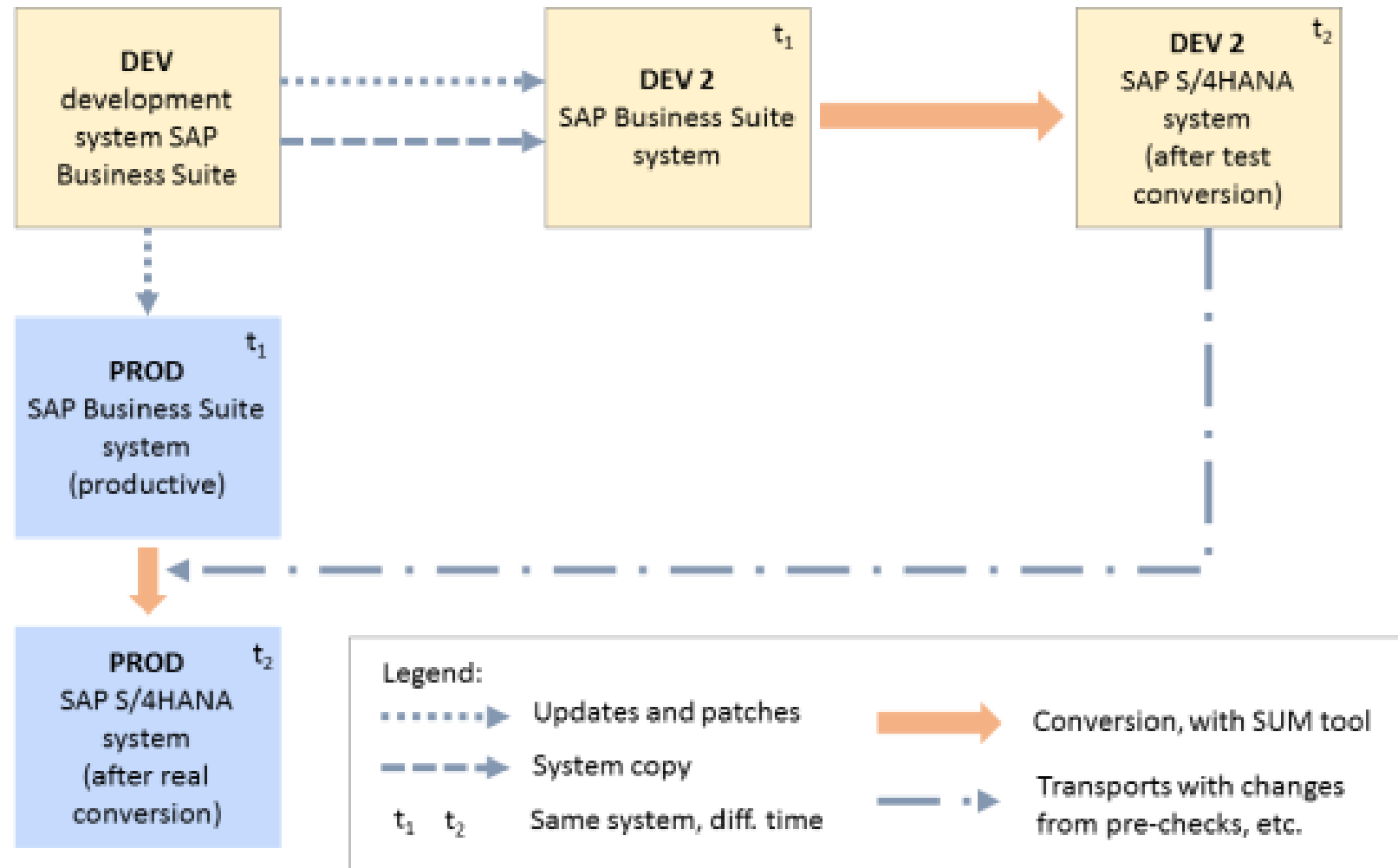
BENEFITS

- Stay with current business processes and move gradually to S/4HANA innovations
- Harmonized business processes and shared master data through consolidation
- Carve out of single entities of the company to SAP S/4HANA and leverage process simplification.

TARGET GROUP

SAP Business Suite customers with multiple SAP ERP or SAP Business Suite on SAP HANA systems, or hybrid cases

Postup konverze



Conversion in a Distributed System Landscape

Děkuji za pozornost!



Ing. Ladislav Horváth
SAP Solution Architect



+420 605 232 935
ladislav.horvath@sabris.com



www.sabris.com
ssc.sabris.com | sharepointecm.cz



Sabris CZ s.r.o.
Pekařská 621/7, Praha 5

sabris
friendly professional