



# SAP Analytics Cloud

**Jan Vajgant**  
Head of Business Analytics

**sabris**  
friendly professional

# SAP analytické portfolio



Cloud data sources  
and applications

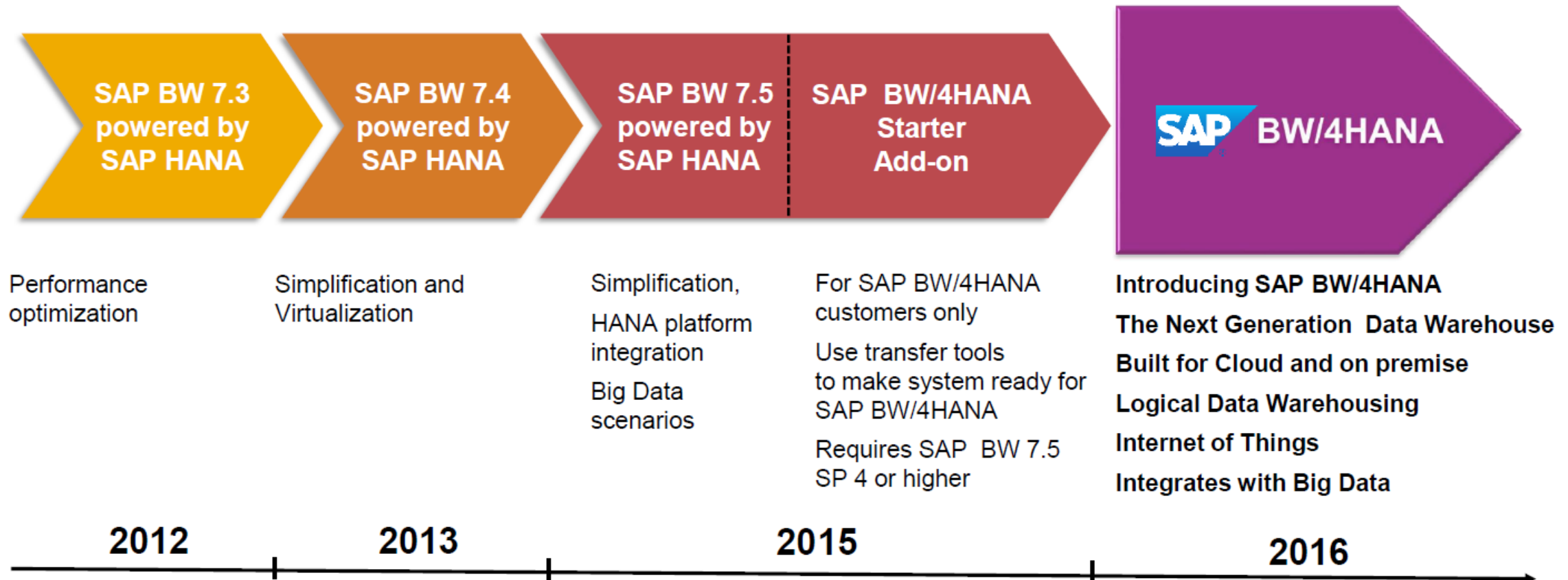


On-premise data sources  
and applications

- **SAP Analytics Cloud**

- **SAP Business Objects**
- **SAP BW/4 HANA**

# BW4/HANA



# BW4/HANA



High Performance

**10-100x faster query  
performance**



Openness

**Easier access  
to all information**



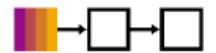
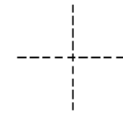
Simplicity

**Reduced  
development efforts**



Modern Interface

**New user interface for  
all users**



Conversion

**Powerful transition  
tools**

# SAP Business Objects

## SAP BusinessObjects Enterprise

### BI

- SAP BusinessObjects BI 4.2, Mobile BI
- Lumira, Design Studio, Analysis for Office, Webi, Crystal Reports

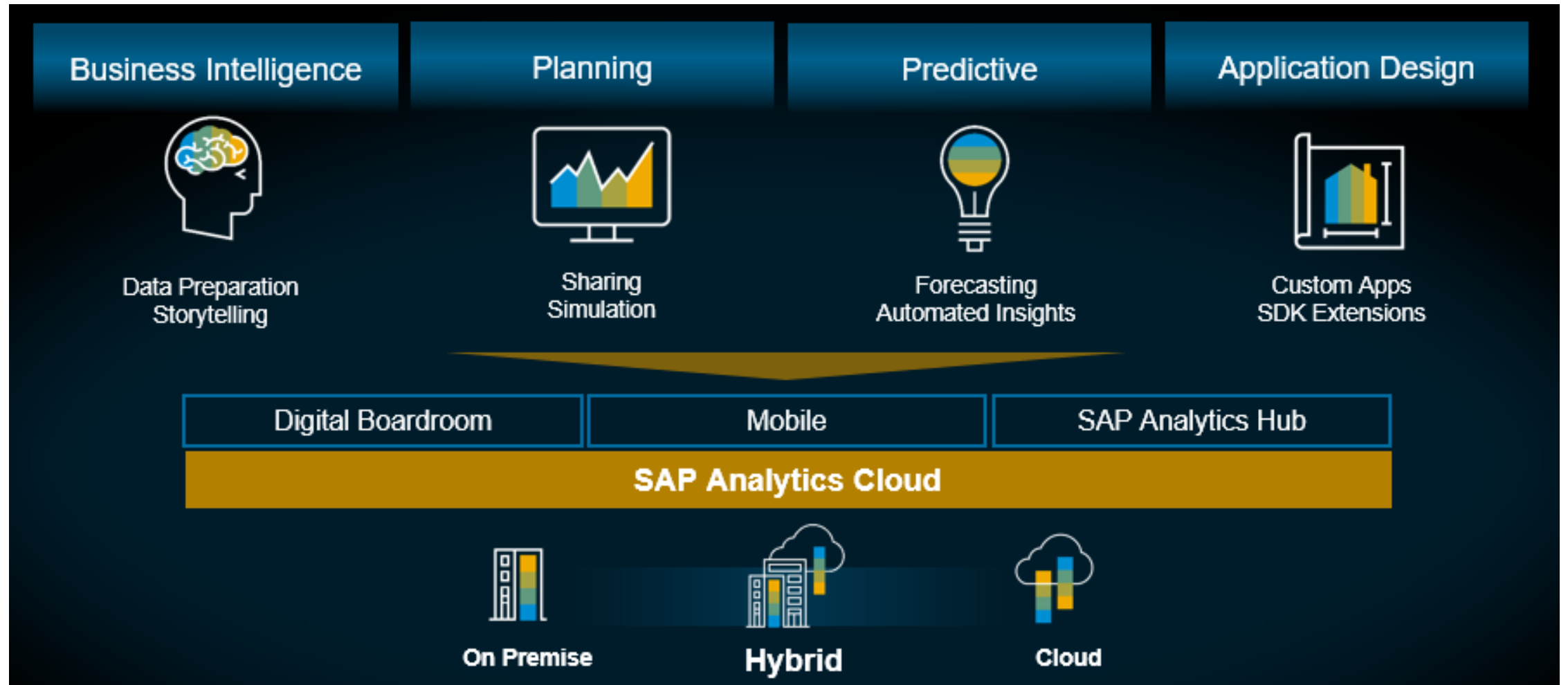
### Planning

- SAP BusinessObjects Planning and Consolidation 10.1  
+ *other solutions*

### Predictive

- SAP BusinessObjects Predictive Analytics 3.0

# SAP Analytics Cloud



# Datová integrace

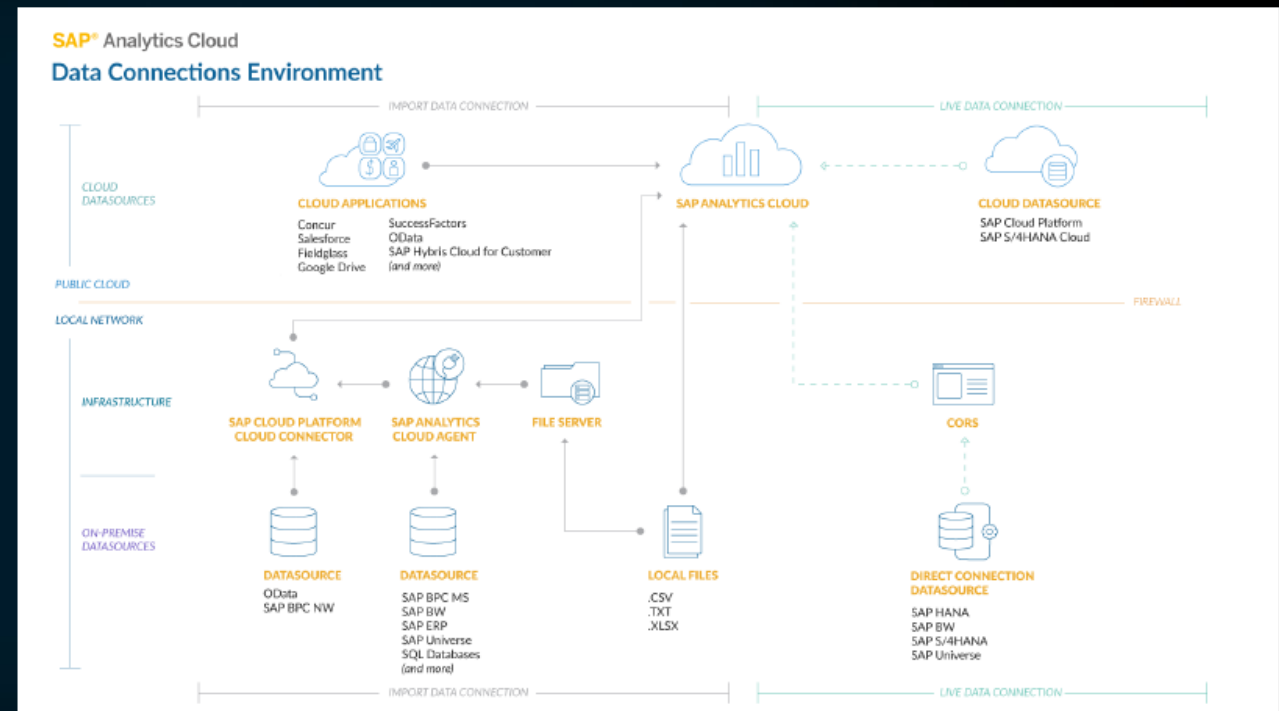
Connect to data anywhere stored in on-premise databases, cloud databases, and personal files. Enrich data and business metadata in preparation for self-service data analysis through purpose built data modeling capabilities and calculations

## Live connections

- Data replication is not required
- Leverage business metadata directly without additional modeling
- Leverage existing security and data authorizations

## Data import connections

- Business users can model data with Smart Data Preparation
- Easily track and reverse data transformations
- Refresh data on demand or via schedule





# Zdroje dat

## Live

### Cloud data sources

SAP Cloud Platform<sup>1</sup> SAP S/4HANA Cloud SAP SuccessFactors SAP Ariba

### SAP data sources

SAP HANA SAP BW SAP BW4/HANA SAP S/4HANA SAP Universe

### Access via SDI for SAP Cloud Platform & SAP HANA<sup>2</sup>

Apache Hive AWS SAP Vora SAP Sybase ASE, IQ, ESP OData  
Microsoft SQL Server Spark SQL Oracle Teradata MaxDB  
IBM DB2 MySQL Netezza Facebook Google+ Twitter

### Partner delivered

APOS DB2 Denodo Microsoft Analysis Services Microsoft Azure  
Microsoft SQL Server MongoDB MongoDB Atlas MySQL Netezza  
Oracle Oracle Essbase Oracle Exadata Sybase IQ Sybase SQL Anywhere  
Redshift Teradata Google BigQuery

■ Delivered ■ Planned within the next 6 months ■ Partners

1. Requires SAP Cloud Platform DBaaS license

2. SAP Cloud Platform connects to data using Smart Data Integration and Smart Data Access Adapters

## Import

### Cloud data sources

SAP Hybris Cloud for Customer SAP Cloud Platform<sup>1</sup> SAP Business ByDesign SAP S/4HANA Cloud  
SAP SuccessFactors SAP Fieldglass SAP Workforce Analytics Concur OData  
Google BigQuery Google Drive Google Sheets Salesforce Dow Jones DNA

### SAP data sources

SAP BPC NW & MS SAP HANA SAP ECC SAP Universe SAP BW SAP BW4/HANA  
SAP S/4HANA

### Other data sources

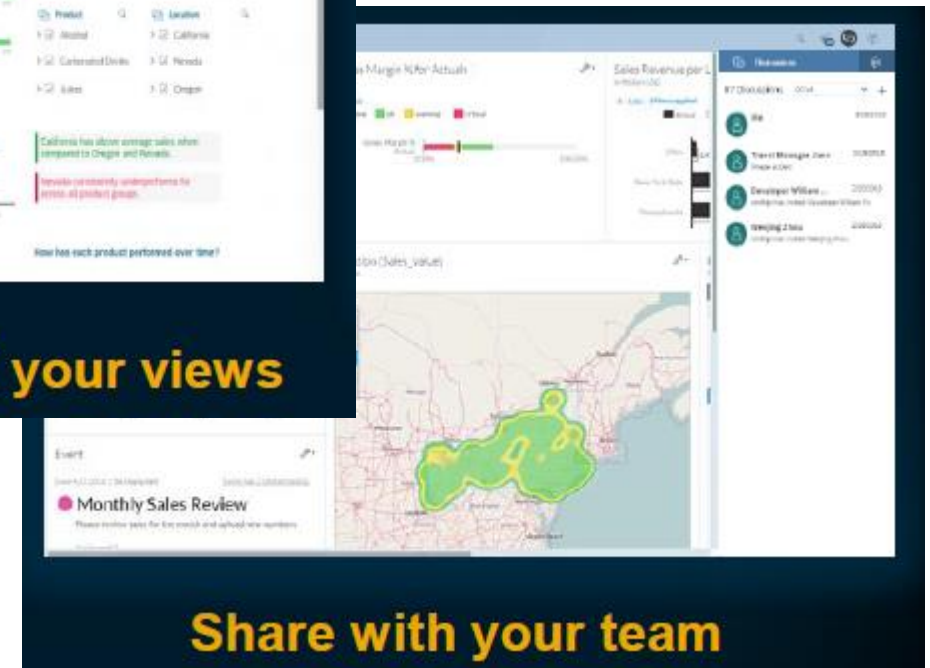
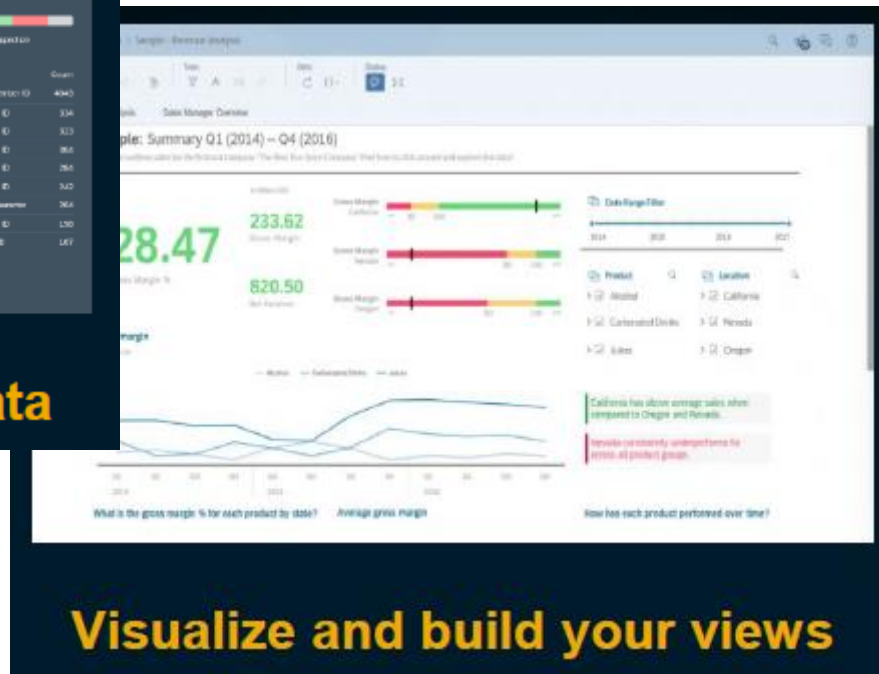
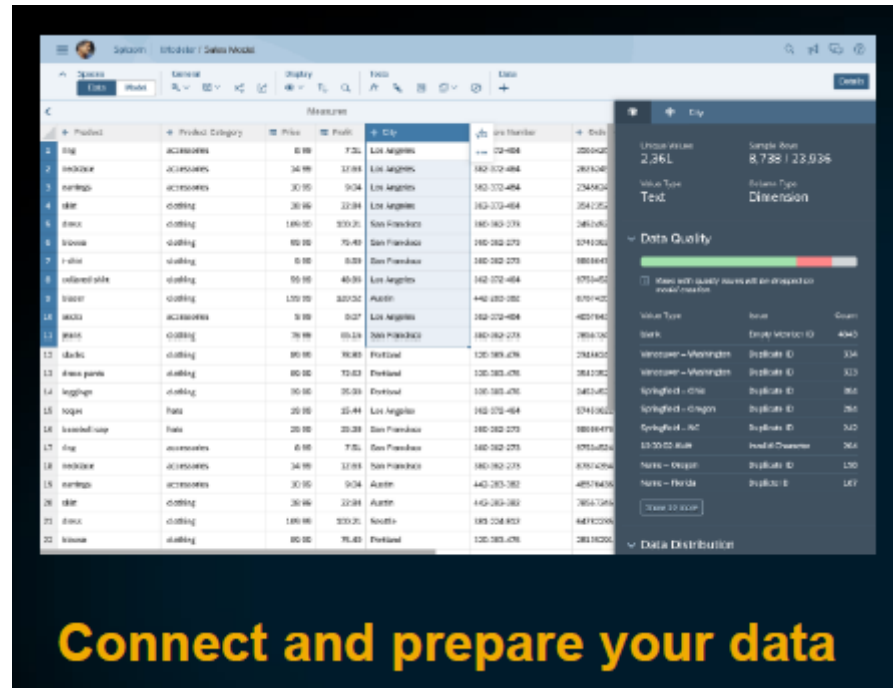
IBM Microsoft SQL Server MySQL Netezza OData Oracle  
CSV Excel Progress OpenEdge

### Partner delivered

APOS	CDATA	DataDirect Cloud
Web Intelligence	QuickBooks	eloqua
	Microsoft SharePoint	Google Analytics
	NetSuite CRM & ERP	Microsoft Dynamics CRM
	Oracle Marketing Cloud	Hubspot
	MongoDB	Marketo
		SugarCRM



# Reporting



# Plánování

## Cloud first strategy

SAP is committed to delivering innovative applications in the Cloud. Consistent with this, our strategic direction for planning follows on and aligns with our broader Analytics strategy. Specifically:

- ***SAP Analytics Cloud is SAP's primary strategic solution for planning moving forward***
- ***The majority of new investments for planning will be delivered via SAP Analytics Cloud for planning, and this includes enhanced value for existing BPC via hybrid FP&A scenarios***

Standalone planning and with SAP  
S/4HANA and other cloud apps



**Analytics Cloud<sup>1</sup>**

Customers requiring an on premise  
solution

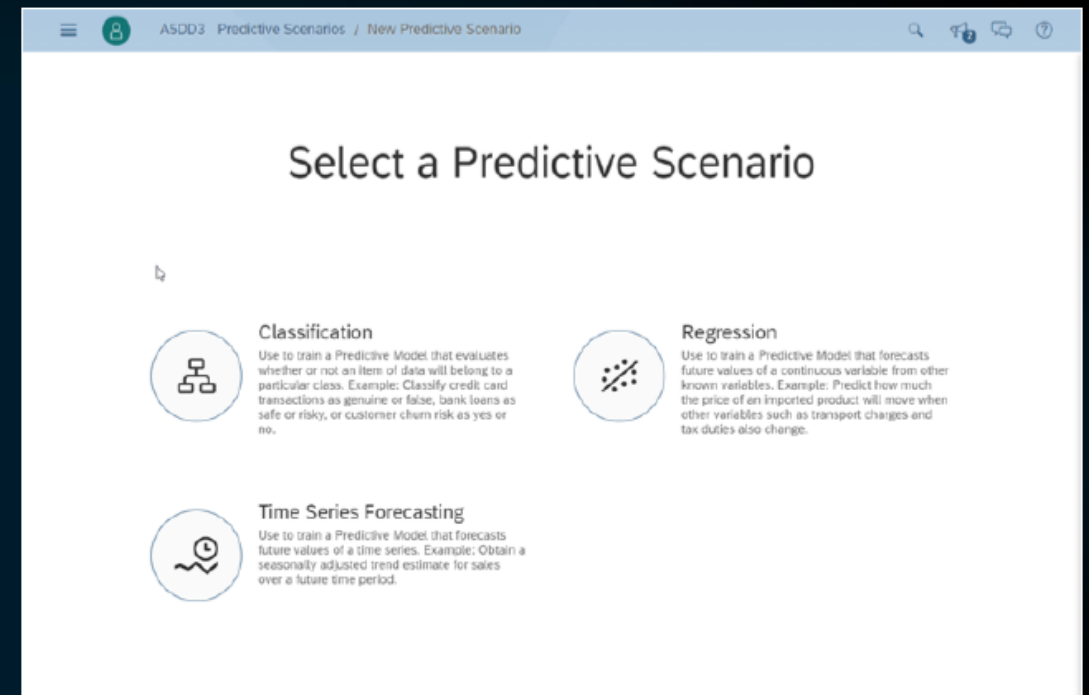


**BPC<sup>2</sup>**

# Predikce

A self-service solution in the cloud supporting data ingestion, predictive model authoring and model management in SAP Analytics Cloud

- Predictive made simple for business users
- Business problem focus captures user intention
  - Classification, regression and segmented time series use cases supported
- Support for SAP Analytics Cloud import data sources
  - File Import
- Transparent, understandable and trustworthy results
- Consume predictive results in Stories



# Business content - SAP

## Lines of business

- Advanced Compliance Reporting
  - Business ByDesign (Finance and Procurement)
  - Environment, Health and Safety
  - Finance \*
  - Finance Contract Accounts (FI-CA)
  - Finance – Live based on Semantic Tags
  - Financial Consolidation S/4HC (BPE)
  - Financial Planning & Analysis S/4HC (BPE) \*
  - FI Operational Expense Planning \*
  - Human Resources (SuccessFactors)
  - Human Resources Salary Planning \*
  - SAP Marketing
  - Manufacturing S/4HC (BPE)
  - Procurement
  - Procurement S/4HC (BPE)
  - Product Cost Planning \*
  - Project and Portfolio Management
  - Project Budgeting & Planning S/4HC (BPE) \*
  - Project Staff Planning \*
  - Real Estate
  - Sales and Distribution
  - Sales Performance and Target Planning (CRM) \*
  - Solution Manager: Test Suite Analysis / IT Service Management Analytics
  - Trade Management
  - Travel & Expense (Concur) \*
  - Vendor Management System (Fieldglass)
- \* Package includes planning

## Industries

- Banking
- Big Data Margin Assurance (Telco)
- Chemicals
- Consumer Products
- Engineering, Construction & Operations
- Health Care
- Insurance
- Mill Products
- Mining
- Oil & Gas
- Professional Services S/4HC (BPE)
- Public Sector
- Public Services: Higher Education and Research
- Retail (BPE)
- Retail (Model Company Core Retail)
- Rural Sourcing Management
- Utilities

**SAP®** Analytics Cloud content

Further information can be found in the following [blog](#)



# Business content - partneři

## The power of our eco system, now directly in SAP Analytics Cloud



Abaco Consultores  
Logistics and supply  
chain



B4 Consulting  
Construction



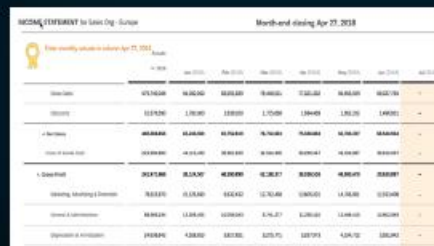
Cognizant  
Equipment Effectiveness



Comerit  
Analytics for SAP Lease  
Administration by  
NAKISA



Delaware  
Costs to Serve



Infomation  
Corporate Data  
Collection, simplified with  
SAP Analytics Cloud \*



Infosys  
Utilities 360 - Energy  
Supply



PwC  
Predictive Analytics

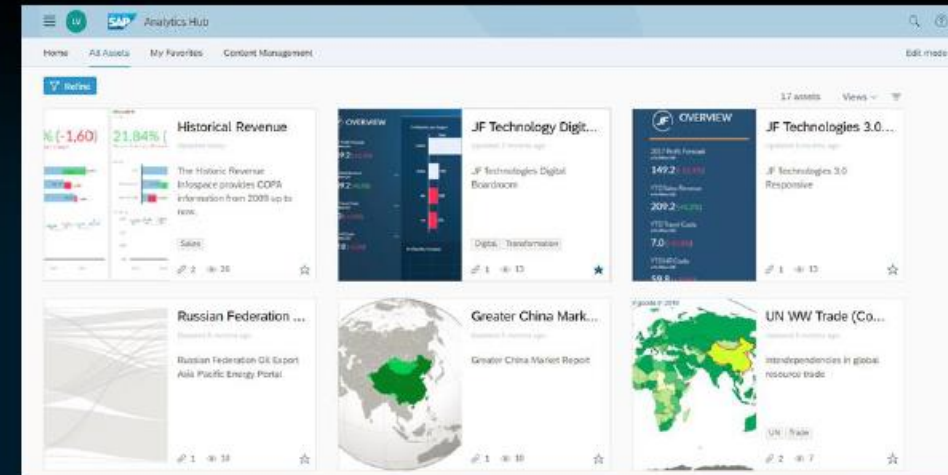


Visual Crossing  
Location Analysis for  
SAP Analytics Cloud

# SAP Analytics Hub

## Seamless access to any deployment

- Cloud based, single point of access for on-premise and cloud analytics, providing unified user experience independent of content or deployment
- Business users have a simple way to search for content, get information, and access analytics
- Content is documented, categorized, and curated by power users who publish links to selected analytics for business users
- Only stores metadata, not actual data or analytics



SAP Analytics Cloud



SAP BusinessObjects Enterprise



Other content:  
SAP & 3<sup>rd</sup> parties

